



The Big Toddle

Easy peasy animal masks

Make a fun mask to wear on
the day of your Big Toddle.

There are lots of different animals to choose from



This activity ties in perfectly with the EYFS framework and is great for:

- Expressive arts and design
- Communication and language
- Understanding the world

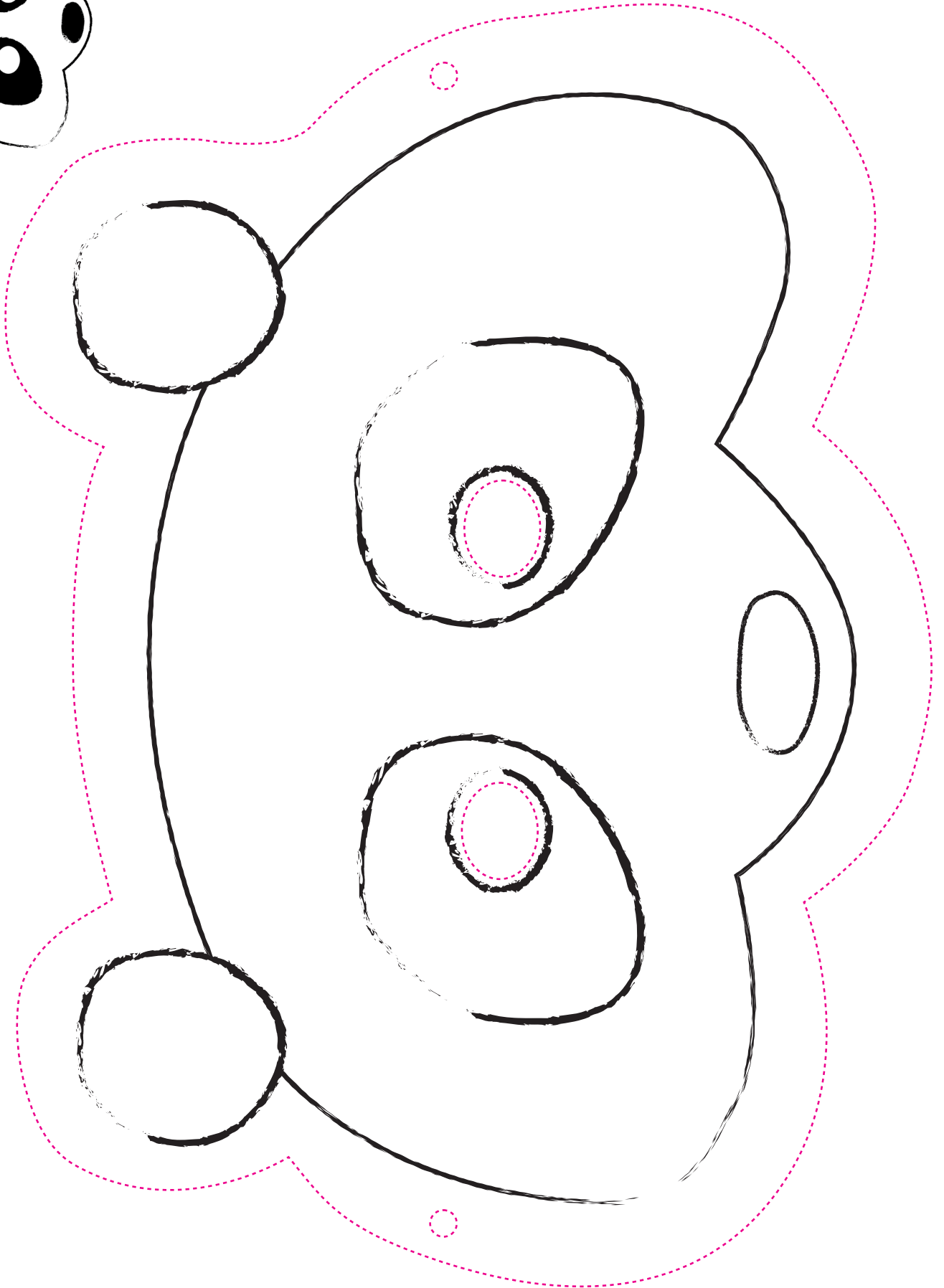
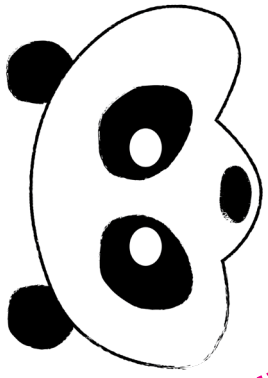
1. Discuss with your child/children which animal they'd like to be and print off the template(s)
2. Let your child/children get creative and colour in their mask(s) with pens, crayons, pencils or paint
3. Carefully cut out the template
4. Trace the outline of your mask onto cardboard and cut it out – don't forget the eyes!
5. Help your child/children glue their mask(s) to the cardboard
6. Use a hole punch to make a hole on each side of the mask and loop some string or elastic through, or glue a lollipop stick to the bottom of the mask to hold onto.

For this activity
you will need:

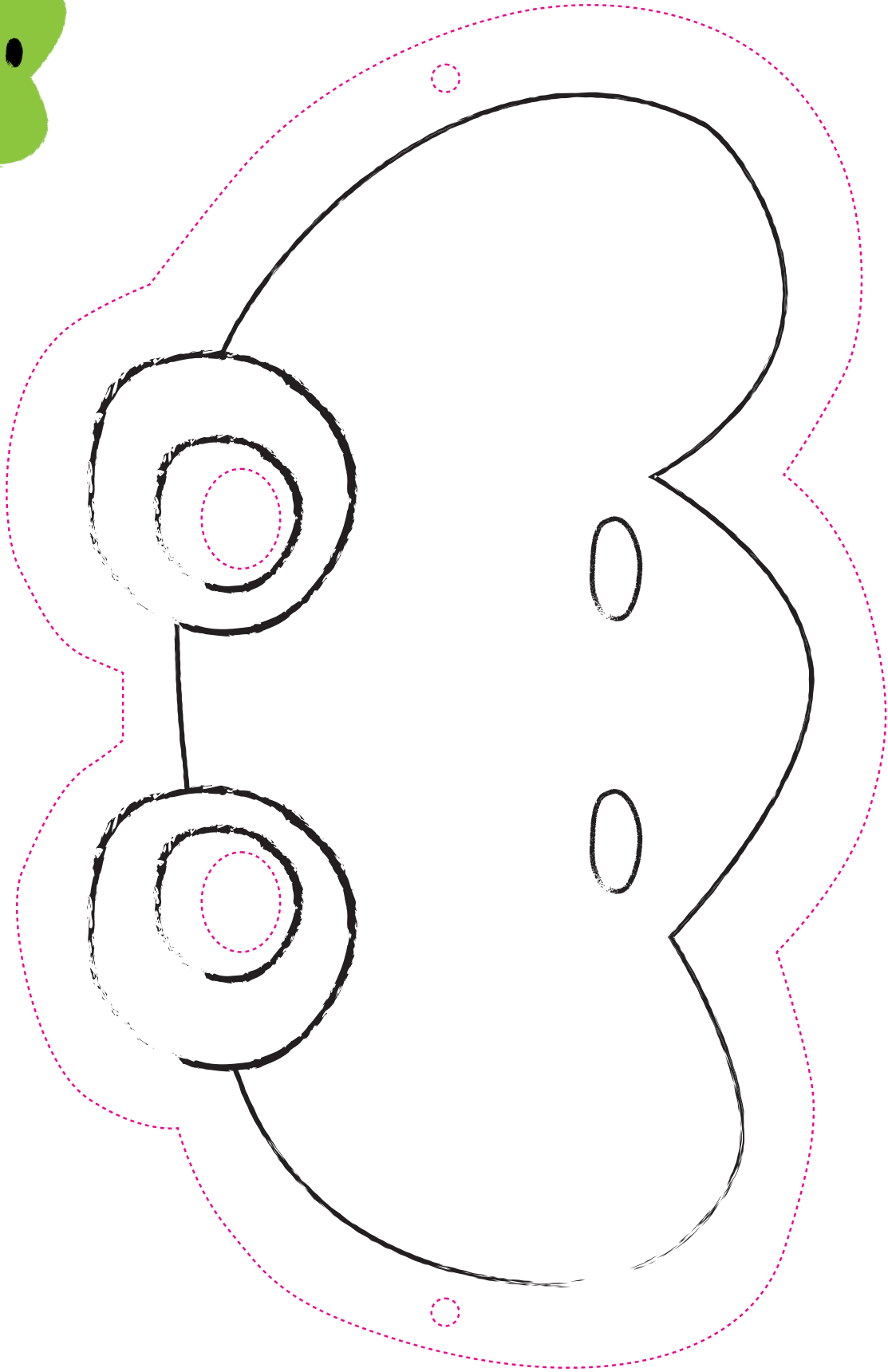
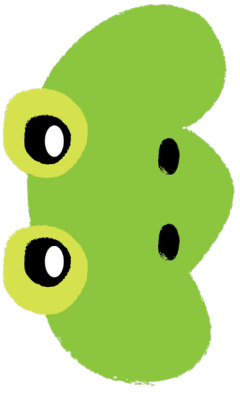
- A print out of one of our animal face templates (included in this document)
- Colouring pens/pencils, crayons or paint
- Cardboard
- Glue
- Scissors
- A hole punch and string/elastic or a lollipop stick.



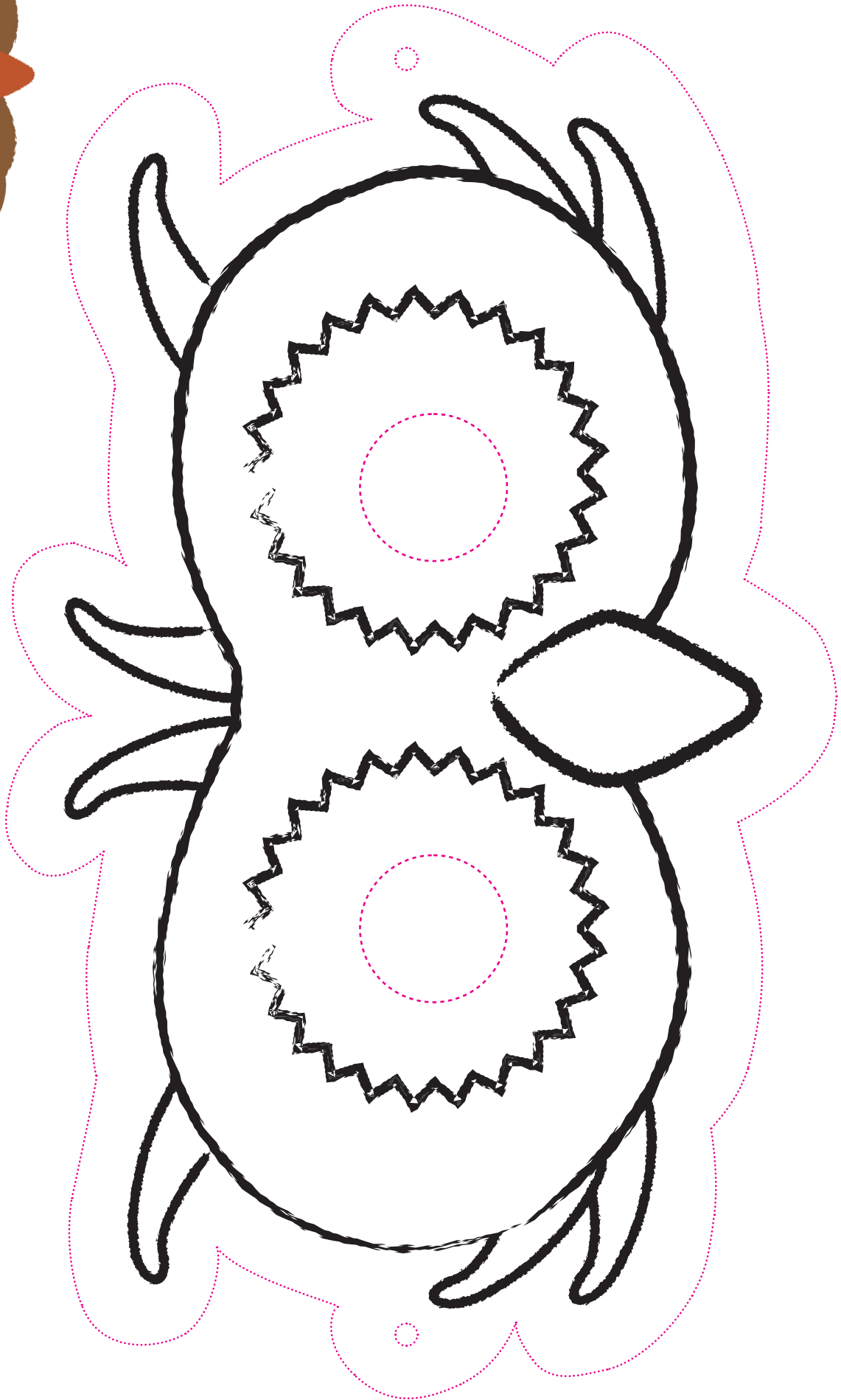
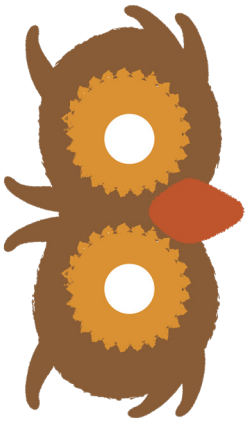
✂ CUT HERE



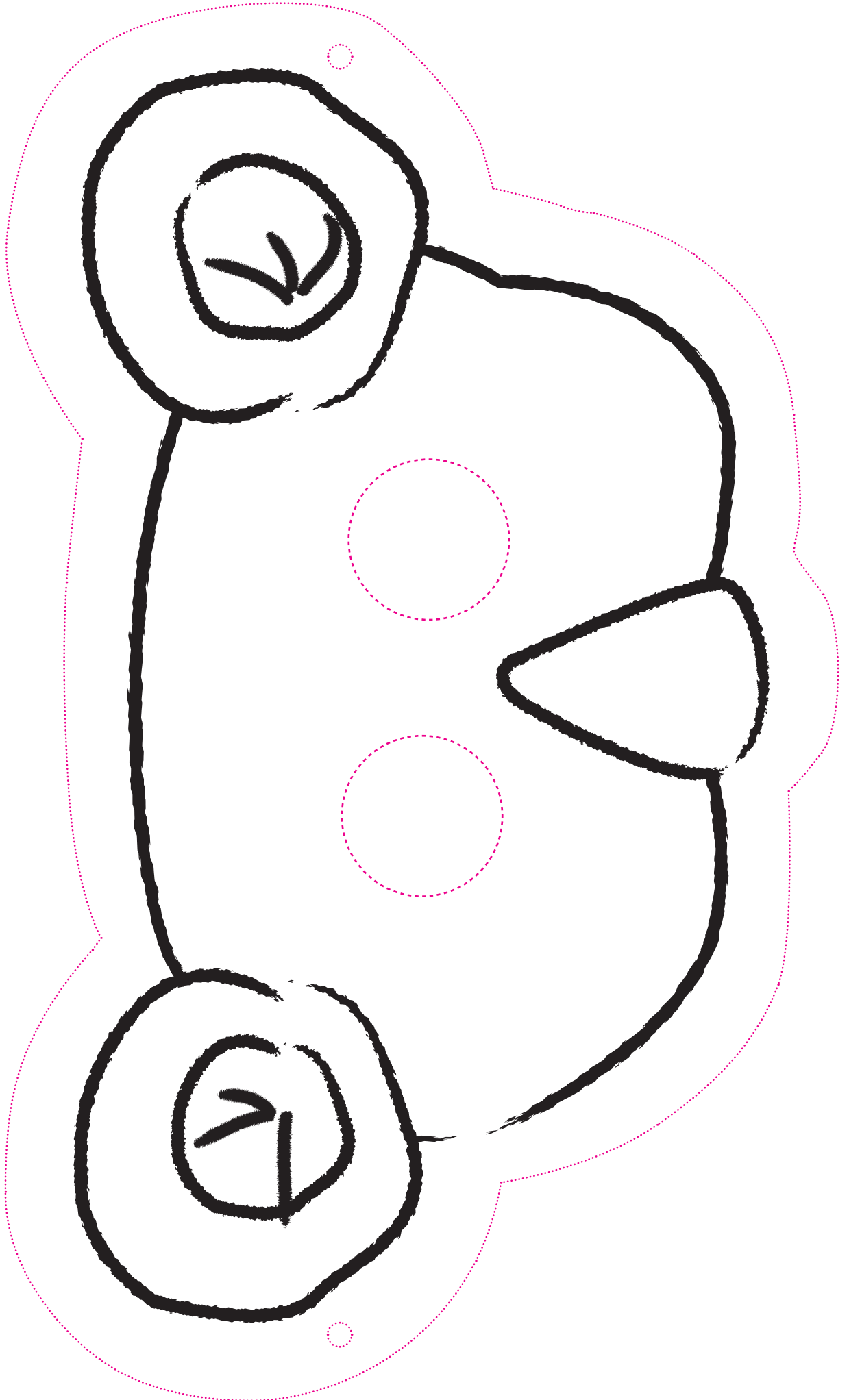
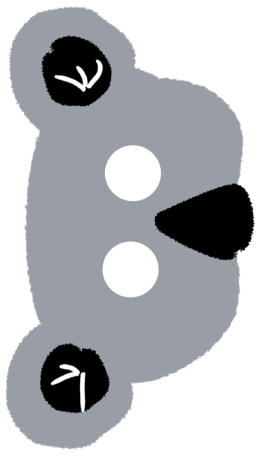
✂ CUT HERE



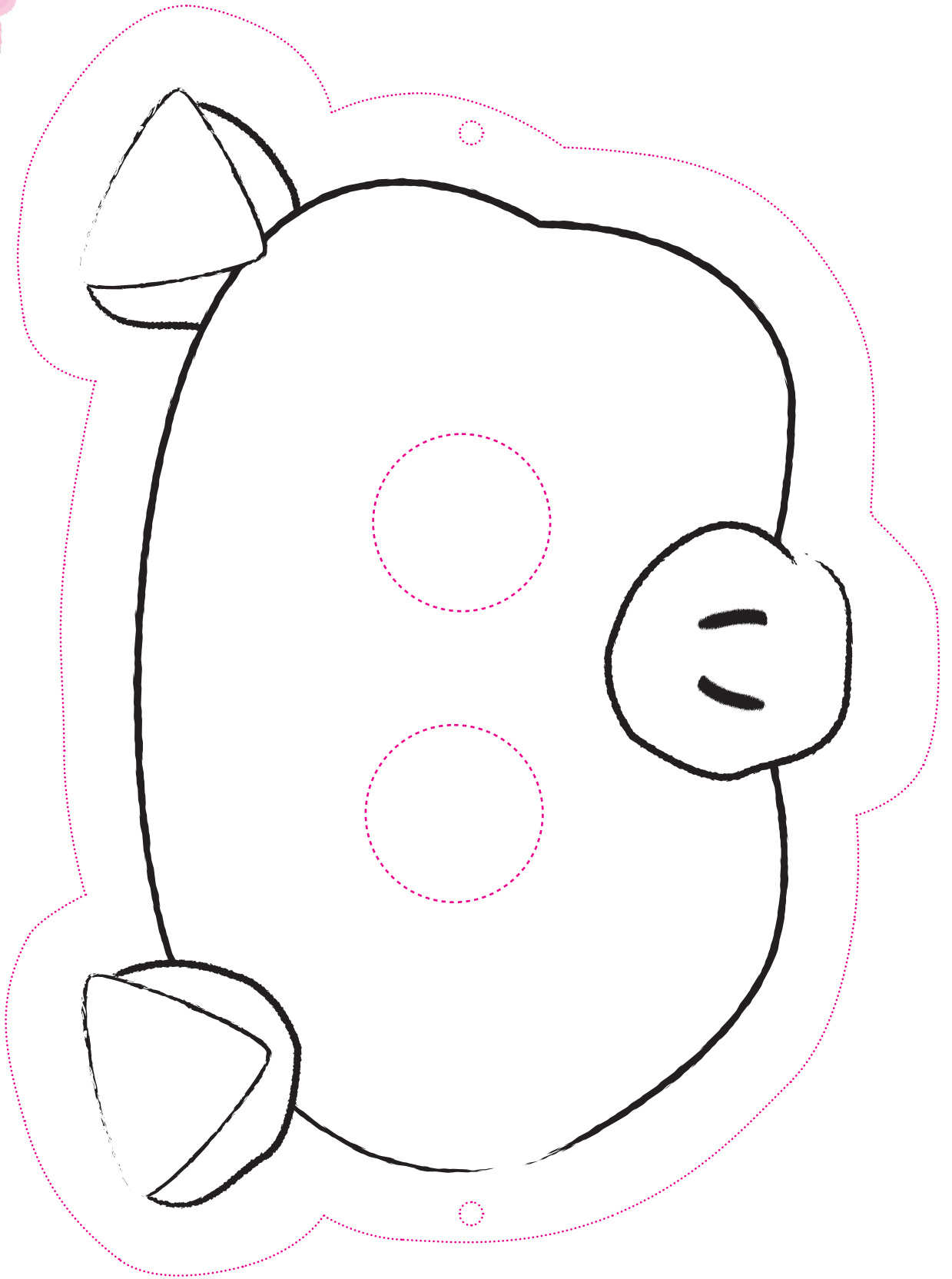
✂ CUT HERE



✂ CUT HERE



✂ CUT HERE



✂ CUT HERE

